

HAND-TO-HAND FOR RICKETTS'S GUNS ON
THE EVENING OF THE SECOND DAY.
SEE P. 313.



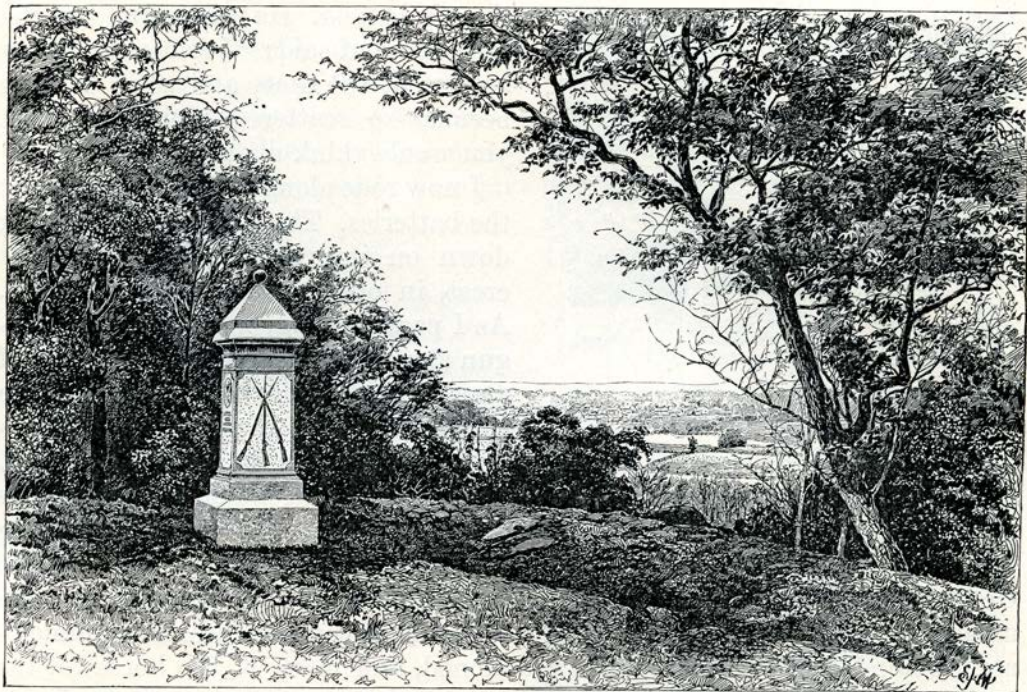
STEUART'S BRIGADE RENEWING THE CONFEDERATE ATTACK ON CULP'S HILL, MORNING OF THE THIRD DAY.



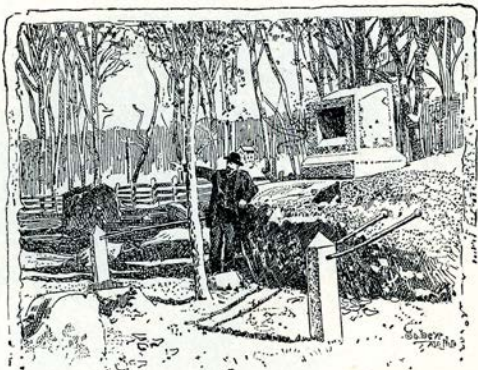
THE 29TH PENNSYLVANIA FORMING LINE OF BATTLE ON CULP'S HILL AT 10 A. M., JULY 3.



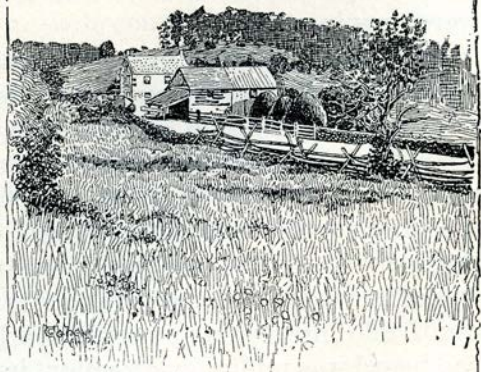
BREVET MAJOR-GENERAL GEORGE S. GREENE.
FROM A PHOTOGRAPH.



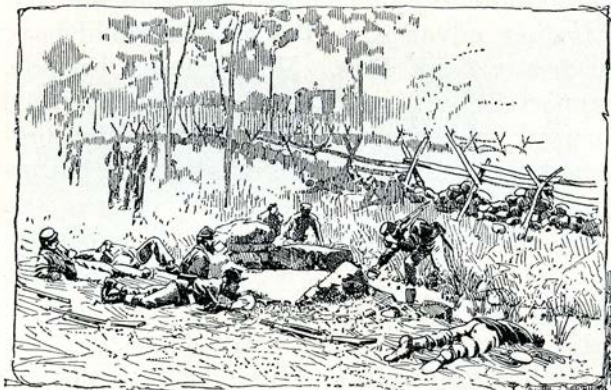
GETTYSBURG FROM CULP'S HILL. FROM A PHOTOGRAPH TAKEN ABOUT 1886.



MONUMENT OF THE 2D MASSACHUSETTS INFANTRY, FACING THE EAST BASE OF CULP'S HILL.



SLOCUM'S HEADQUARTERS, POWER'S HILL.



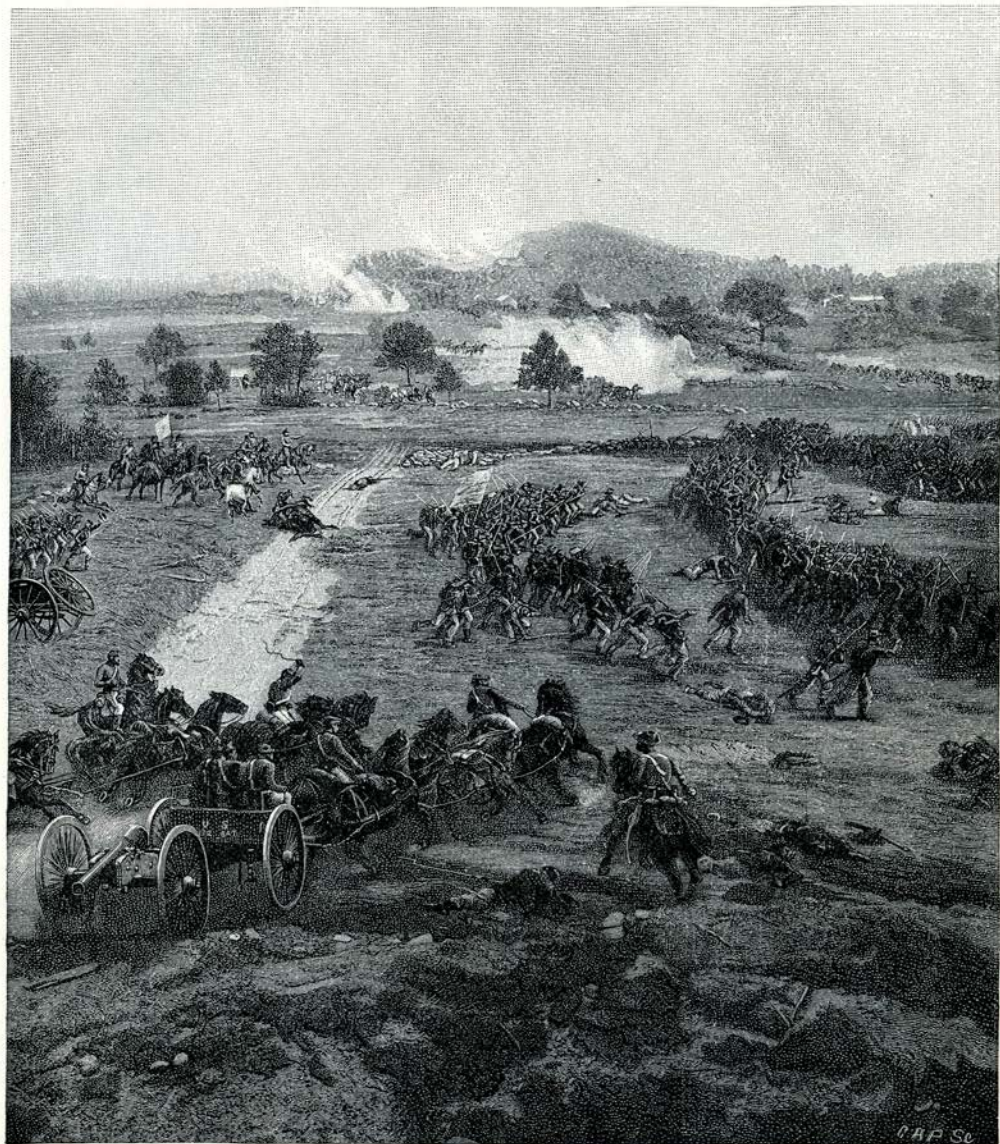
MENCHEY'S SPRING, BETWEEN CULP'S HILL AND
THE CEMETERY GATE.



SPANGLER'S SPRING, EAST OF CULP'S HILL.

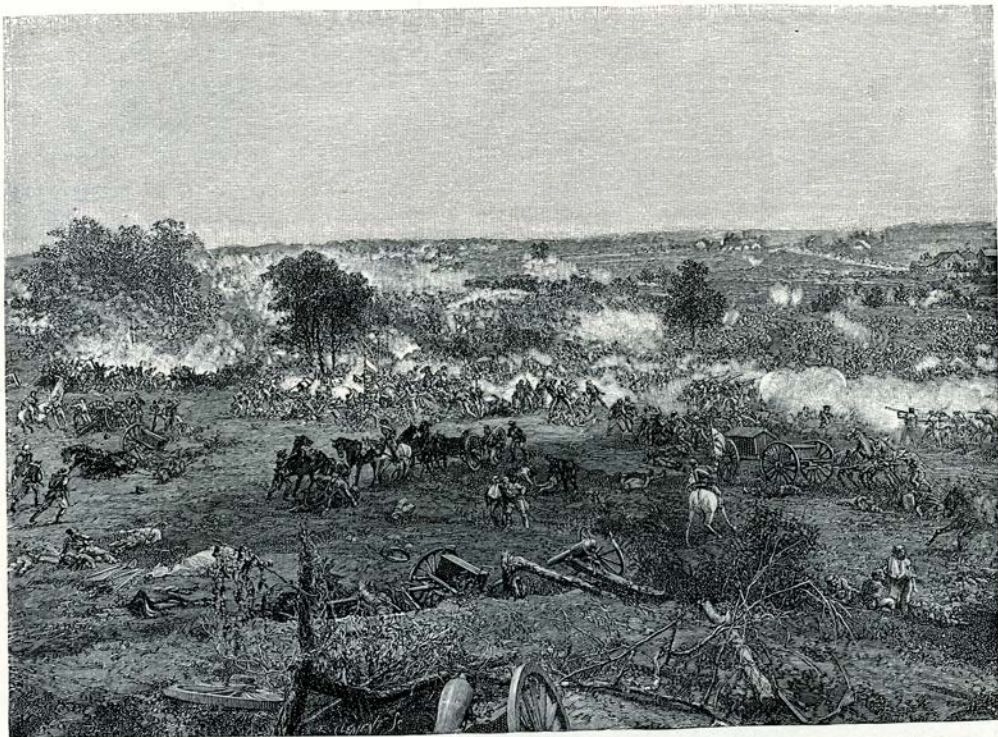


**COLONEL ELIAKIM SHERRILL, COMMANDING
THE THIRD BRIGADE OF HAYS'S DIVISION,
SECOND CORPS. KILLED JULY 3, 1863.
FROM A PHOTOGRAPH.**



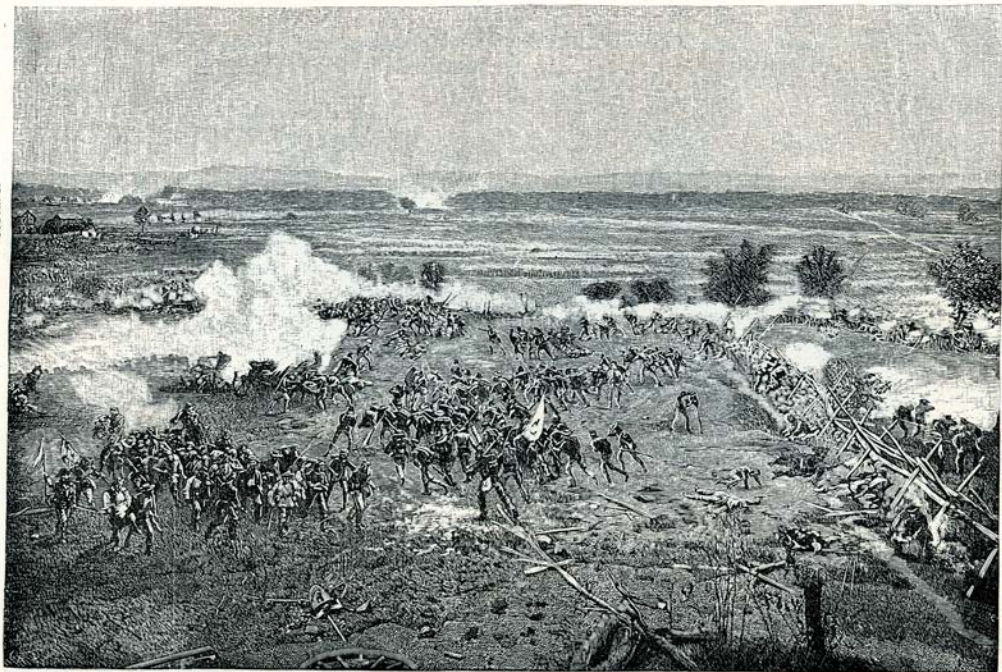
PICKETT'S CHARGE, I.—LOOKING DOWN THE UNION LINES FROM THE "CLUMP OF TREES."

General Hancock and staff are seen in the left center of the picture.—This and the two pictures that follow are from the Cyclorama of Gettysburg, by permission of the National Panorama Company.

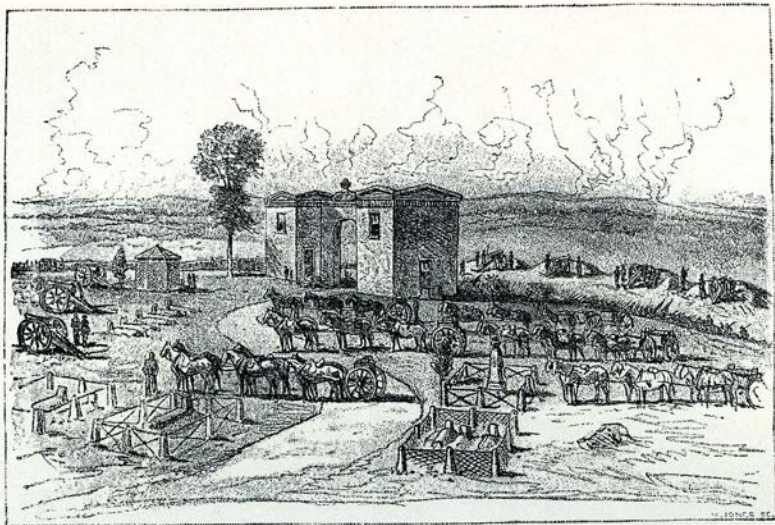


PICKETT'S CHARGE, II.—THE MAIN COLLISION TO THE RIGHT OF THE "CLUMP OF TREES."
FROM THE CYCLORAMA OF GETTYSBURG.

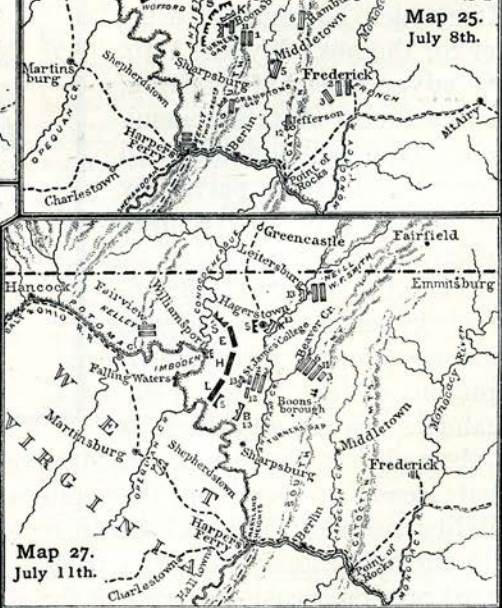
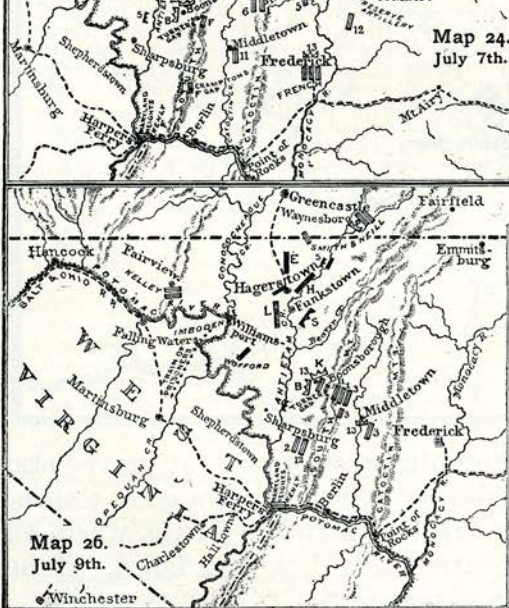
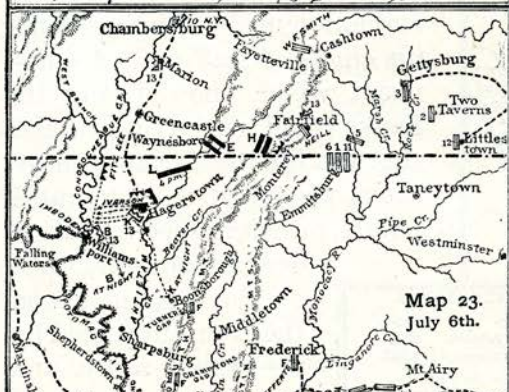
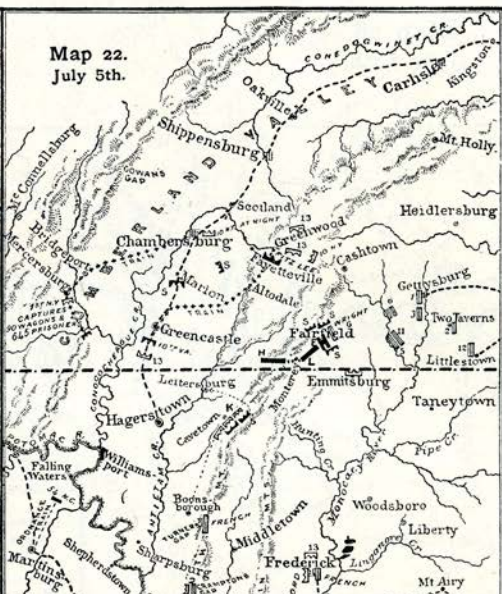
In this hand-to-hand conflict General Armistead, of Pickett's Division, was killed, and General Webb, of Gibbon's Division, was wounded.



PICKETT'S CHARGE, III.—(CONTINUATION OF THE PICTURE ON P. 378.)
FROM THE GETTYSBURG CYCLORAMA.



INSIDE EVERGREEN CEMETERY, CEMETERY HILL. FROM A WAR-TIME SKETCH.

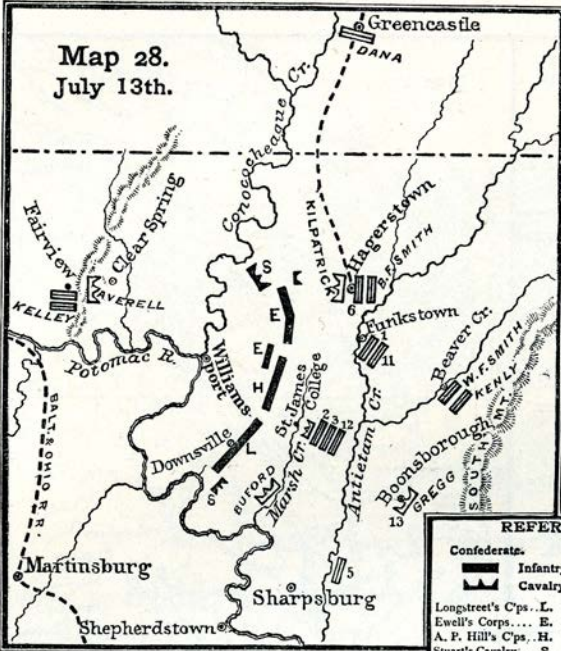


REFERENCES.

Confederate.	Union.
Infantry.	Infantry.
Cavalry.	Cavalry.
Longstreet's Corps... L.	1st Corps... 1
Ewell's Corps... B.	2d Corps... 2
A. P. Hill's Corps... H.	3d Corps... 3
Stuart's Cavalry... S.	5th Corps... 5
	6th Corps... 6
	11th Corps... 11
	12th Corps... 12
	Cavalry... 13

SCALE OF MILES
3

Map 28.
July 13th.



REFERENCE

Confederate.



Infantry.



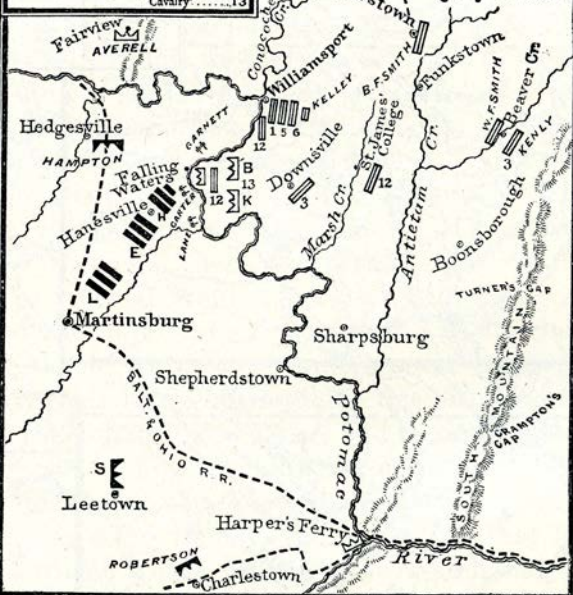
Cavalry.

Longstreet's C's... L.
Ewell's Corps... E.
A. P. Hill's C's... H.
Stuart's Cavalry... S.

A. P. Hill's C'ps...H. 3d Corps.....3
 Stuart's Cavalry...S. 5th Corps.....5
 6th Corps.....6
 11th Corps....11
 12th Corps....12
 Cavalry.....13

SCALE OF MILES
 1 2 3

Map 29.
 July 14th.

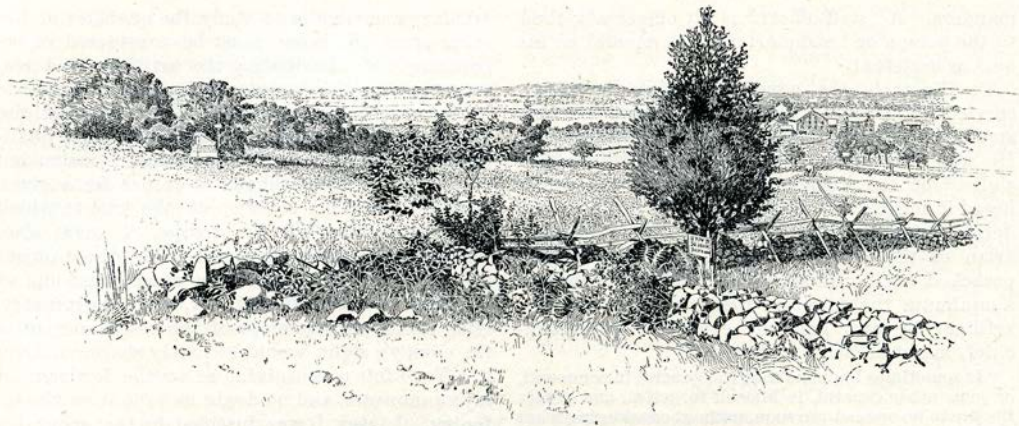




CONFEDERATE PRISONERS ON THE BALTIMORE PIKE. FROM A WAR-TIME SKETCH.

discredit under all circumstances the Army of the Potomac and the manner identified with it,—and that was the effect in this case.

The losses of both armies were very large. The revised return of the Army of the Potomac: killed 3072; wounded 14,497; mis-



GROUND OVER WHICH PICKETT, PETTIGREW, AND TRIMBLE CHARGED. FROM A PHOTOGRAPH
TAKEN SINCE THE WAR.



CEMETERY RIDGE AFTER PICKETT'S CHARGE. FROM A WAR-TIME SKETCH.



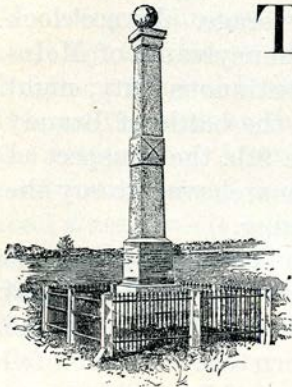
FARNSWORTH'S CHARGE.

FARNSWORTH'S CHARGE AND DEATH.



BRIGADIER-GENERAL ELON J. FARNSWORTH.
FROM A PHOTOGRAPH.

T



MONUMENT ON THE FIELD OF THE CAVALRY
FIGHT BETWEEN THE FORCES OF GREGG
AND STUART. FROM A PHOTOGRAPH.



BREVET MAJOR-GENERAL D. McM. GREGG.
FROM A PHOTOGRAPH.



BATTLE BETWEEN THE UNION CAVALRY UNDER GREGG AND THE CONFEDERATE CAVALRY UNDER STUART.
FROM A SKETCH MADE AT THE TIME.





MONUMENT IN THE GETTYSBURG CEMETERY.

BY

I



"CARRY ME BACK TO OLE
VIRGINNY."



GOOD-BYE!



THE RETREAT FROM GETTYSBURG.



**BRIGADIER-GENERAL J. JOHNSTON PETTIGREW,
C. S. A., KILLED IN AN ACTION AT FALL-
ING WATERS, MD., JULY 14, 1863.
FROM A PHOTOGRAPH.**



CONFEDERATE VIDETTE.



CONFEDERATES CAPTURED AT GETTYSBURG. FROM A PHOTOGRAPH.